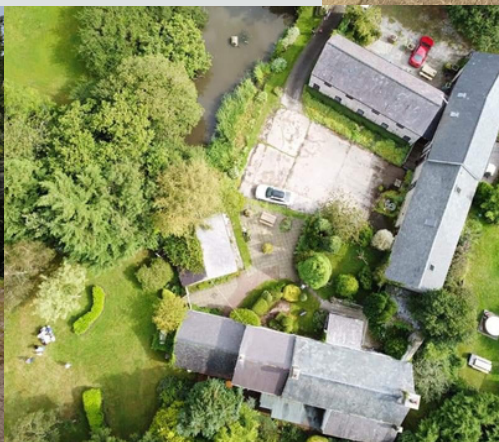


Welcome to

# PEN Y BRYN FARM

HOLIDAY COTTAGES



ABERGELE  
CONWY  
NORTH WALES

[WWW.HOLIDAY-COTTAGES-NORTH-WALES.CO.UK](http://WWW.HOLIDAY-COTTAGES-NORTH-WALES.CO.UK)

## ABOUT THE PROPERTY

LOCATED ON OVER 25 ACRES OF BEAUTIFUL WELSH COUNTRYSIDE WITH WALKS FROM OUR DOORSTEP. JUST 3 MILES FROM THE NORTH WALES COAST AND A55 GIVING EASY ACCESS TO ALL THE BEST ATTRACTIONS IN NORTH WALES AND THE SURROUNDING AREAS.

*Pen y Bryn Farm and Holiday cottages, Betws yn Rhos, Abergele, Conwy, LL22 8PL*



# Welcome!

We are located just 3 miles inland from the market town of Abergele, Conwy in North Wales. Just on the outskirts of the village of Betws Yn Rhos. Pen y Bryn farm dates back to 1600's but is no longer a working farm. Our fields are used for grazing sheep and our property provides a home for an abundance of plants and wildlife including migrating geese which visit each year to nest on our wildlife ponds.

We keep free range chickens and ducks and some pet animals including pygmy goats and a pig.

Guests are welcome to enjoy a walk around the property and use the picnic areas provided.

## Enjoy your stay!

---

### WOOD FIRED HOT TUB HIRE

We have 3 Wood-Fired Hot tubs onsite available for nightly hire £75 per night. Tub will be fully prepped and lit for you. Pre booking is required.

---



### CONTACT INFO MICHELLE

Phone: 07557 878463

Email: [penybryncottages@gmail.com](mailto:penybryncottages@gmail.com)

### BBQ

Available on request, charcoal not provided.

### DOGS

Dogs are welcome in Primrose and Bluebell cottage and Pen y Bryn Farmhouse.

Please keep all dogs on a lead.



# LOCAL WALKS

You can enjoy beautiful countryside walks from our doorstep with local beauty spots such as Moelfre Uchaf and Moelfre Isaf giving panoramic views of coast and country. Tan y Gopa woods and tower hill trail run between our village and Abergele town the elevated woodlands give stunning views over the North Wales Coast.

The North Wales Coastal path (a national trust marked route) can be picked up in the nearby villages of Llandullas or Rhyd y foel. For those seeking a flatter route, The North Wales Coast cycle track can also be picked up at Llandullas or Abergele and Pensarn beach.

A gentle stroll to the village of Betws yn Rhos takes around 30 minutes each way along quiet country roads.

Here you will be welcomed at the local shop and postoffice for refreshments and essentials and the village pub - The Wheatsheaf where you can enjoy Welsh singing with the locals.

Just across the road you will find St Michaels, a historic village church and you may even hear its bells.

The village is also home to a pay and play golf course where you can play the traditional game or 'foot' golf and enjoy a bite to eat at the clubhouse bistro 'Urbane'

# A WALKERS PARADISE...

Nestled between the Clwydian Range and Snowdonia/ Eryri national park. We are in an ideal location to explore the many routes along these popular spots, including The famous Offas dyke path, Moel Famu, The Snowdonia slate trail and many other trails and nature reserves in the area. Mount Snowdon/ Y Wyddfa has 6 different routes to take to the summit and a number of beautiful villages lakes and waterfalls to explore in its surroundings.

Woodland trails, hidden hillforts and millions of years of natural history are waiting to be explored.

## HELPFUL LINKS

[WHEATSHEAF](#)

[SILVER BIRCH GOLF](#)

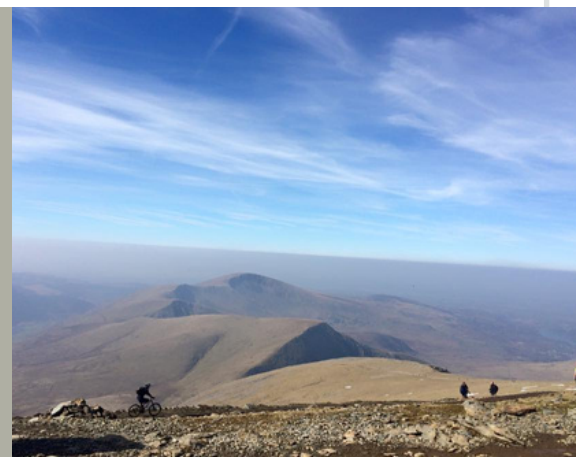
[VILLAGE SHOP](#)

[GARAGE AND SHOP](#)

[SNOWDON WEATHER](#)



COAST &  
COUNTRY





# PLACES TO EAT

Abergele & Surrounding  
areas

*Eating in*



Abergele town is just a 10 minute drive away offering a number of scrumptious places to dine!

Eat in at one of our friendly pubs including The Bull and the Pen y Bont- good for larger groups or a more intimate setting at The George and Dragon or The Harp.

Sample some Cantonese cuisine and dine in at Sakura or pick up a takeaway from one of the many options including traditional seaside Fish and chips, Pizza, Sandwiches Kebabs and Curry.

## BOOK A TABLE

THE BULL

THE GEORGE AND DRAGON

THE HARP

PEN Y BONT

SAKURA



## RECOMMENDED BY THE LOCALS

BLACK LION LLANFAIR TH.

OLD STAG LLANGERNYW.

HICKORY'S SMOKEHOUSE RHOS ON SEA.

COTTAGE LOAF LLANDUDNO.

## GOOD FOR LARGER GROUPS

TALARDY ST ASAPH.

PLOUGH ST ASAPH.

## SOMETHING SPECIAL

BRYN WILLIAMS BISTRO COLWYN BAY

SIGNATURES CONWY

JACKDAW CONWY

*Enjoy your meal!*

[www.holiday-cottages-north-wales.co.uk](http://www.holiday-cottages-north-wales.co.uk)





## SHOPS IN ABERGELE

Chemist, Post Office  
Gift Shops and Local crafts  
Coffee Shops and Cafes  
Fresh Flowers, Fruit and Veg  
Local Butchers  
Tattoo, Beauty and Hair Salons  
Dog Groomers & Dog Play park  
Homewares and Furniture  
Premier and Nisa stores  
Tesco Supermarket

## BAR & DRINK:

The Hoptomist - Micro Pub  
The Winery/ Y Gwyndy  
The Castle - Pub.

## CAFES & COFFEE SHOPS

Caffi Crempog  
Jade Leaf Cafe  
Roots Cafe  
The Coffee Cottage  
The Dog Park Coffee shop  
The Beach Cafe  
Pantri Bach Cafe

## THINGS TO DO:

Pentre mawr park, Abergele is a lovely location for families with children. Here you can enjoy a play on the swings, feed the ducks and walk the dog and its just a minutes walk over the train bridge to the beach. With a lovely outdoor play area cafe and amusements you can enjoy a hot drink or an ice cream while taking in the sea views .

## TOURIST ATTRACTIONS:

Abergele became famous across the uk in 2021 when the popular TV show "I'm a celebrity get me out of here" was hosted at Gwrych Castle, The Castle is now open to the public again and hosts many open days and events.

Neighbouring the Castle you will find Manorafon farm park. Popular with local families and visitors to the area you can enjoy fun farm based activities and cute fluffy animals.

Take a team to escape from 'Locked In' by solving puzzles in one of their themed games rooms.

## TRANSPORTATION: A CAR IS RECOMMENDED WHEN STAYING WITH US

Abergele and Pensarn Train Station 3 miles [TRAINLINE](#) [NATIONAL RAIL](#) [TRANSPORT FOR WALES](#)  
Nearest bus stop Penrefail crossroads [ARRIVA BUS](#) [TRAVELINE CYMRU](#) [NATIONAL EXPRESS](#)  
Ferry Port Holyhead [HOLYHEAD PORT](#)  
Taxi numbers Gele P.H. 07771 501569 Lyn An Taxi 01745 777666



## WELSH HISTORY

Wales is home to over 600 Castles and you can find some of the most famous ones within a short drive. Conwy Castle is a spectacular example and the surrounding town is full of charm.

Wales has an abundance of beautiful historical buildings including Churches, Chapels Inns and Tea rooms located in the many villages and towns that make up our rugged green landscape.

Llandudno  
Conwy  
Betws y coed  
Llanberris  
Beddgelert  
Llanrwst  
Caernarfon  
Anglesey

*Places To Explore ...*

## POPULAR ATTRACTIONS

North Wales is full of fabulous attractions for all ages and tastes.

Here are some of the most popular places to visit. Located within an hours drive

### THRILL SEEKERS

Go Below  
Zip world  
Tree top adventure  
Costeering  
Dry ski slope  
Kayaking  
Airsoft  
Paintball  
Go Karts  
Shooting  
Caving  
Gorge Walking  
Running Events  
Triathlons  
Mountain biking

### FAMILY FUN

Greenwood Park  
Manorafon Farm Park  
Welsh Mountain zoo  
Slate museum  
Steam Raikway  
Gypsy wood paemrk  
Sc2 Waterpark  
Llandudno museum  
Dog Park  
Amusement arcades  
Funfairs

### LOCAL TREASURES

Llandudno pier  
Great orme tramway  
Copper mines  
Cable cars  
Snowdon railway  
RSPB  
Welsh Castles  
Conwy Brewery  
Snowdonia /Eyri  
Clwydian range  
Offas dyke path  
Welsh Coastal path  
Coastal Cycle track  
Churches & Cathedrals

### ENTERTAINMENT

Eirias Park  
Venue Cymru  
Theathre Clwyd  
Rhyl Pavilion  
Nova Centre  
Mostyn Gallery  
Oriell Gallery  
Golf  
Fishing  
Boating  
Festivals  
Markets

[www.holiday-cottages-north-wales.co.uk](http://www.holiday-cottages-north-wales.co.uk)





## NEAREST BEACHES

Abergele and Pensarn  
Llandullas  
Old Colwyn  
Colwyn Bay  
Rhos on Sea  
Penmaenmawer  
Llandudno  
Deganwy  
Conwy  
Towyn  
Kinmel Bay  
Rhyl  
Prestatyn  
Talacre



## DOG FRIENDLY BEACHES NORTH WALES

If you're travelling with your furry friends you'll be glad to know there are lots of dog friendly places to visit including miles and miles of dog friendly beaches. Some of our Beaches have restricted areas during May and September mostly to protect our wildlife like nesting birds. Click here to find out more

Abergele and Pensarn Beach is pebble and shale you can drive onto the beach near to the train station. Dog Restrictions are in place on the promenade and a short stretch of the beach area in front of it between May and September. You can walk along the beach eastwards towards Kinmel Bay and Towyn and enjoy the funfair or West towards Llandullas, Colwyn bay and Llandudno in both directions the beach becomes more Sandy.

